



PERCIPERE

SAP Qualified
PARTNER-PACKAGED SOLUTION

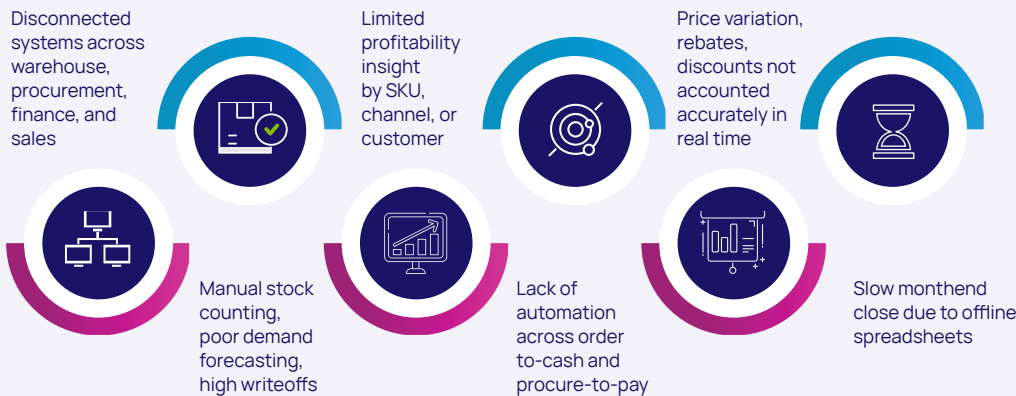
Elevate for Wholesale

Smarter Distribution: Real-Time Margins, Automated Warehousing



Increasing complexity and challenges

Wholesale distributors are under pressure from rising customer expectations for real-time visibility, fast fulfilment, and error-free service, which legacy systems cannot support. Increased complexity from rebates, promotions, and claims demands advanced analytics and automation to manage margin erosion and protect profitability.



Elevate for Wholesale by Percipere

A low risk, fast time to value and fixed cost SAP-qualified partner-packaged solution tailored specifically for needs of Wholesale Distributors and FMCG organisations in the UK. A scalable, secure, and compliant world class cloud ERP delivering seamless integration, automation, real-time analytics and Percipere industry specific business AI innovations to unify finance, operations, and analytics—reducing costs and drive profitable growth and competitive edge.

Tomorrow's operational and finance leaders in wholesale distributors **MUST** take advantage of digital transformation to unify and automate operations with total visibility, full financial control, and confidence to scale sustainably and profitably

Accelerate month-end close by up to

60%

Enables finance to become a value creation engine for the business

Boost order accuracy to

99%

Essential to meet rising customer expectations

Warehouse productivity

x2

Creates a scalable platform for sustainable growth

Increase pick accuracy rate up to

99%

Drives operational efficiency to reduce costs and reduce margin erosion

Improve margin visibility up to

100%

Critical for protecting profitability

We guarantee successful implementation:

From

20 weeks



Wholesale Base

Growing wholesalers with single warehouse and no bespoke legacy system with a separate WMS system.

Package Software Components:

- SAP Cloud ERP (Public Edition)
Finance
Procurement
Sales
Inventory Management
Warehouse Management System (WMS)
SAP Integration Suite (Basic)

Percipere:

- Ecommerce platform (x1) integration
WMS third-party integration for stock postings
Tax authorities integration - mandatory statutory reporting, declaration & submission
Bank (x1) payment & bank integration
Output Forms (x10)
In-app extensibility (x5)
Basic Rebate Management

~20 weeks (+5 weeks Hypercare)

Wholesale Plus

Scaling wholesalers with a high YoY growth a standard adoption mindset, SAP integrated WMS no bespoke legacy system.

Package Software Components:

- Wholesale Base (included)
+ Standard Transportation Management (transportation management planning)
Percipere:
+PerciScan Warehouse Scanning Application Accelerator

~26 weeks (+5 weeks Hypercare)

Wholesale Premium

Large wholesalers with multi-country operations and customer base having a bespoke legacy system and key end user ERP ease of use focus.

Package Software Components:

- Wholesale Plus (included)
Percipere:
+PerciClaim - Claims Management Cockpit, Duty Report, Advanced Purchase & Sales Rebates Management
+PerciBuy- Guided Buying Cockpit, Fast Pricing Entry, Sales Forecasting, Multi-buy Pricing Schemes
+PerciScan Warehouse Scanning app (Wave picking, Advanced Bin Determination)
+Partner Last Mile Delivery App

~32 weeks (+6 weeks Hypercare)

Why Choose Elevate for Wholesale by Percipere?



Reduce business risk with fixed scope, price and accelerated implementation



Experience faster time to value with industry-specific best practices and automation accelerators



Scale sustainably with industry specific continuous AI-innovations



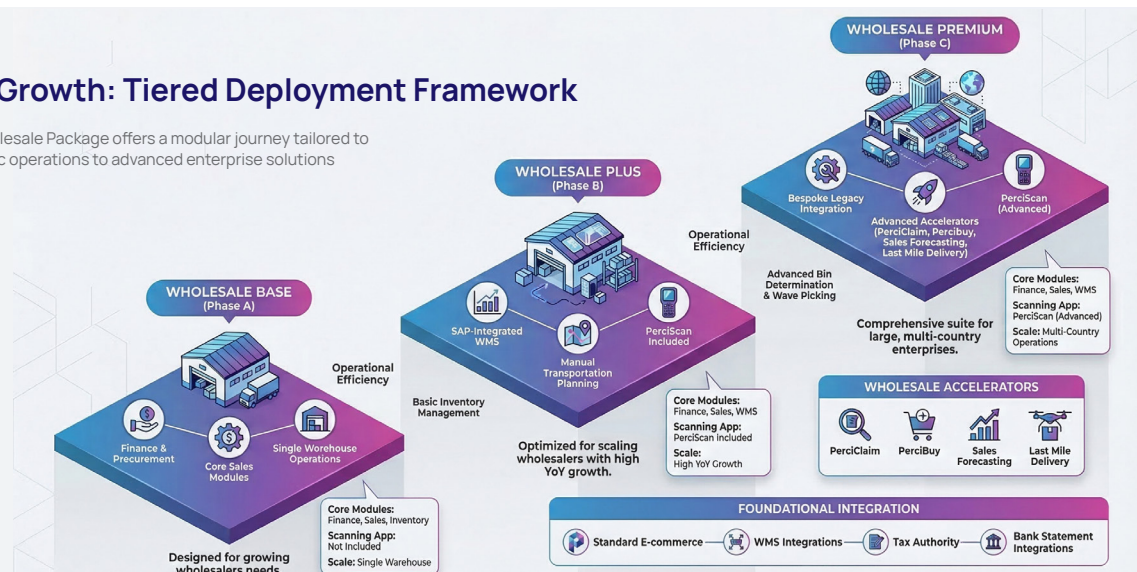
Engage with confidence with predictable business outcomes



A credible packaged solution already proven and qualified by SAP

Scalable Growth: Tiered Deployment Framework

The Percipere Wholesale Package offers a modular journey tailored to maturity, from basic operations to advanced enterprise solutions



The Result:

A wholesale distribution business that can drive profitable scalable growth with full business agility that enables competitive edge to meet fast-changing market dynamics whilst reducing costs.

Engage with us today and take control of your supply chain contactus@percipere.co and book a modernisation assessment for your business.